

# Minnekhada Middle

## Open House and Neighbourhood Learning Centre (NLC) Consultation

**April 27, 2016**

*This event is occurring in anticipation of funding and approval from the Ministry of Education for the seismic replacement of Minnekhada Middle School.*



Learning for a Lifetime

# Agenda

- Introductions
- Background Information
- CHP Presentation
- NLC Consultation
  - Overview
  - What We Have Heard So Far:
    - Survey Feedback
  - Group/Individual Feedback
- Next Steps

# Background Information

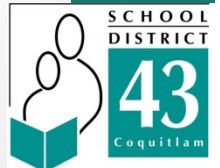
- Minnekhada Middle was assessed and designated as a high seismic risk in need of upgrade under the B.C. Seismic Mitigation Program.
- Detailed feasibility studies demonstrated that the lowest cost option was a seismic replacement over a seismic upgrade.
- In anticipation of Ministry funding and approval, the Board of Education of School District No. 43 (Coquitlam) has approved the Facilities team move forward on the design and public consultations for the seismic replacement.
- The Board has also supported moving forward with a modified repeat design to decrease design time.
- A replacement building will include a new mechanical and electrical system as the current systems have fulfilled their lifespans.
- A replacement building will be fully accessible and include sprinklers.
- Best practice educational research and teaching are also better supported by a new facility.
- Neighbourhood Learning Space will be included.
- Green features and building to LEED Gold standards will be a benefit.



Learning for a Lifetime

# Minnekhada Middle School

- 2 storey building
- 6325 m<sup>2</sup>
- 15 % Neighbourhood Learning Centre
- 23 grade 6 - 8 classrooms



Learning for a Lifetime



Craven|Huston|Powers|Architects

# Preliminary Draft Floor Plan



SECOND FLOOR PLAN

MAIN FLOOR PLAN



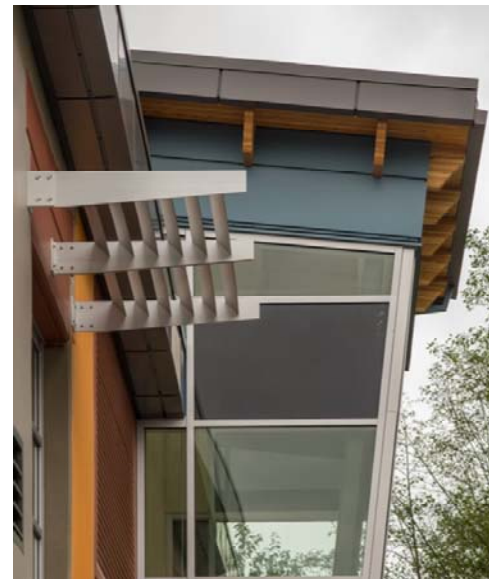
Learning for a Lifetime



Craven | Huston | Powers | Architects

# Environmental Sustainability

- Water efficient fixtures
- Solar shading of windows
- Access to daylight and views from all occupied spaces
- Recycling centers throughout the school
- High efficiency mechanical units
- Natural material selection including exposed wood and steelwork; low-VOC containing paint materials; recycled material content in floor coverings and furnishings.



Learning for a Lifetime



Craven|Huston|Powers|Architects

# Similar Schools



EXTERIOR



Learning for a Lifetime

Craven | Huston | Powers | Architects **CHPA**

# Similar Schools



FRONT ENTRANCE



Learning for a Lifetime



Craven|Huston|Powers|Architects



# Similar Schools



Learning for a Lifetime

CHPA

Craven | Huston | Powers | Architects

# Similar Schools



GYMNASIUM



Learning for a Lifetime



Craven|Huston|Powers|Architects

# Similar Schools

MULTI-PURPOSE  
AND NLC SPACE



Learning for a Lifetime



Craven|Huston|Powers|Architects

# Similar Schools



LIBRARY



Learning for a Lifetime



Craven|Huston|Powers|Architects

# Similar Schools



OPEN TEACHING &  
GATHERING SPACES



Learning for a Lifetime

Craven | Huston | Powers | Architects **CHPA**

# Similar Schools

TYPICAL CLASSROOM



Learning for a Lifetime



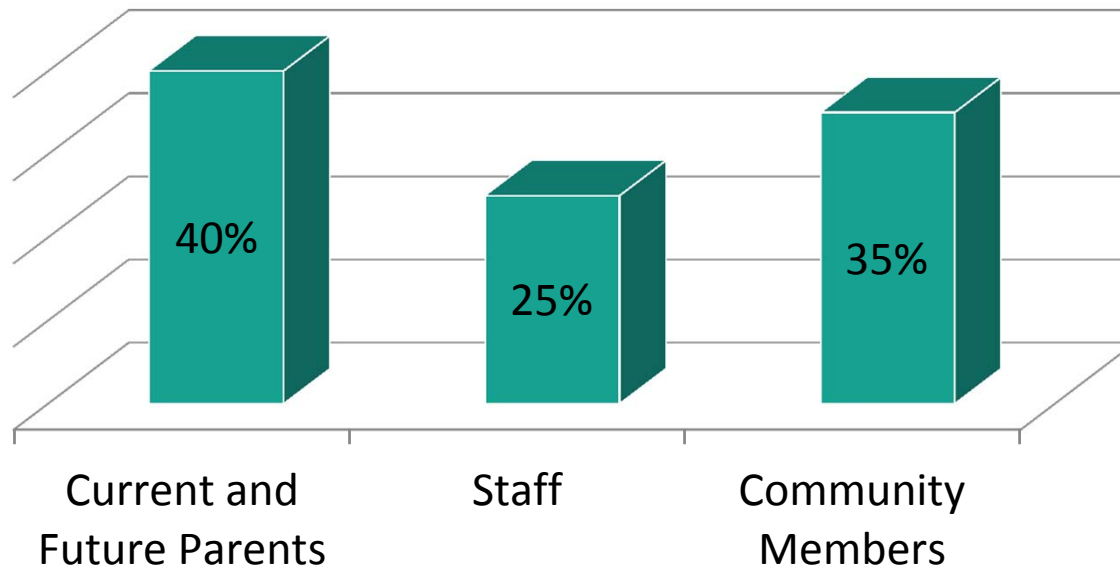
Craven|Huston|Powers|Architects

# Overview of the NLC Concept

- The Ministry of Education has committed to the inclusion of NLC space within the building.
- Goal: to create innovative ways to design schools that mutually benefit both the school and community.
- Variety of models for enhanced programming spaces are possible.
- Inclusion examples in previous SD43 middle schools:
  - Enhanced gym, enhanced fine and performing arts spaces, enhanced multi-purpose and gathering spaces, enhanced curriculum spaces, community meeting spaces, Aboriginal Education Centre, and a daycare.

# Community Survey Feedback

## Who responded...



## Support for NLC Space Inclusions...

92.5% of respondents were in favour of including NLC Space at Minnekhada.



# Identified examples for the NLC Space at Minnehada Middle School

## Mentioned with very high frequency:

- Enhanced gym or community recreation space.
- Enhanced performing or fine arts facilities.
- Meeting space for after school, youth, and/or community programs (such as clubs) – eg: multi-purpose room.

## Mentioned with high frequency:

- Additional classrooms for school and community use.
- Enhanced curriculum spaces.

## Mentioned with medium frequency:

- After school care/daycare space.

# Identified benefits for Minnekhada Middle School and the community for the identified examples (from the previous slide)

## Mentioned with very high frequency:

- Enhanced sense of community/connection.
- Space for after school youth programming.

## Mentioned with high frequency:

- Enhanced student learning.

## Mentioned with medium frequency:

- Health benefits.

# Important issues that need to be considered in moving ahead with the Neighbourhood Learning Centre initiative

## Mentioned with very high frequency:

- Inviting/Usable for both school and community.

## Mentioned with medium frequency:

- Safety in space and/or security of the main school after hours.
- Traffic/Parking.
- Staffing.
- Community engagement and consultation.

# Any other comments or ideas that you believe are important to consider

- Space both school and community can use.
- Continue to communicate with the school and broader community.
- Ensure usable spaces for programs.
- Focus on student needs.
- Work to minimize impacts to community during construction.
- Having community on-site after hours leads to better utilization of school and sense of community.
- Future enrolment growth.
- Community is very happy to see this moving forward in a timely manner.

# Overall Community Survey Themes

- Enhanced gym and recreation spaces, enhanced fine and performing arts spaces, classrooms for school and community use.
- Space for after school programs, clubs, and community to meet.
- Space that supports building an increased sense of community and connection.
- Supports student and community learning.
- Consider traffic/parking and safety/security.
- Continue to communicate with and consult the community.

# Small Group Activity

- In your table groups, please complete the questions provided. These are on the green sheets.
- If you would also like to provide additional individual feedback, please fill out the pink sheets.
- When you are done, please leave your feedback on your table.

# Small Group Activity Questions

1. Please describe the members of your group (eg: 2 parents, 2 staff members, 2 community members).
2. Based on the feedback presented this afternoon, which examples provided does your group feel would be the best fit for the NLC at Minnekhada Middle?
3. Are there any additional possibilities for the NLC space that were not mentioned today but you would like to see included?
4. Please provide any other comments or ideas that you believe are important to consider during the development of the NLC and the entire Minnekhada Middle School project.

# Next Steps

- The School District will be making a decision for the allocation of the Neighbourhood Learning Centre (NLC) space based on the needs of the school, the community, and the school district.
- Our architects will then work with District Facilities Personnel and the District Design Team throughout the process of designing Minnekhada Middle School.



# Thank You



# Questions?